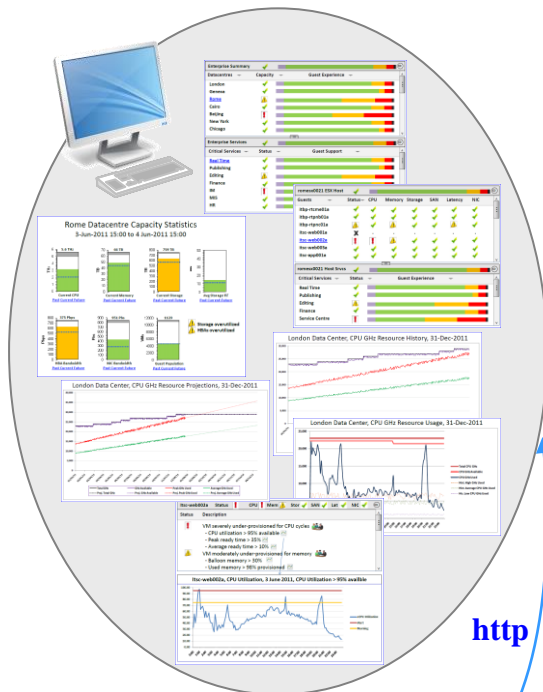


Virtual Infrastructure Performance/Capacity Management



PAWZCloud

Provides web-based capacity and performance management insight for large virtual infrastructures.

Resource usage, capacity status, and future projections may be viewed from the enterprise, data center, cluster, host and guest levels.

Key resource dimensions of virtual infrastructure monitored, analyzed, reported and projected include CPU, Memory, Network, SAN Storage Space, Bandwidth, and Latency.

Provides management, infrastructure and application teams with a multi-level view of guest provisioning, from the enterprise to the individual guests, configured for each team's unique requirements.

Provides provisioning status of services associated with virtual machines at a glance. If PAWZCloud detects problems with guest provisioning, it will automatically generate analysis and advice reports.

Provides a refreshingly cost-effective solution to the need for effective performance and capacity management of large virtual infrastructures.

Components:

PAWZCloud Server – A central server receives data from PAWZCloud Remote Collectors, archives it into a SQL Server database, and generates web viewable interactive reports.

PAWZCloud Analyzer – Runs on the PAWZCloud Server to analyze collected data, detect current issues, project future resource usage, and provide analysis and advice interactively and via e-mail.

Agent-less Collector – Runs on any Windows server and interacts with VMware® VI to capture host performance data.

Intranet

PAWZ Server

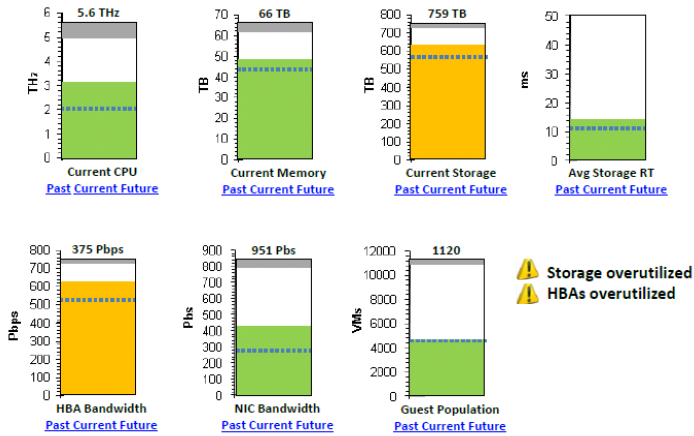
Data Center VIs

- Enterprise, data center, cluster and host views of key virtual infrastructure resources
- Multi-level view of guest and service provisioning
- Long-term resource usage projections
- Detection of under-utilized resources and protection against over-provisioned guests
- Guest provisioning problem identification, analysis, and recommendations
- Uses standard VMware® VI API for data collection
- Backed with over 20 years of performance analysis and capacity management experience

Key Reports and Features

Summary resource and guest status reports are at enterprise, datacenter, cluster, and host levels. Icons are hyper-linked to more detailed reports.

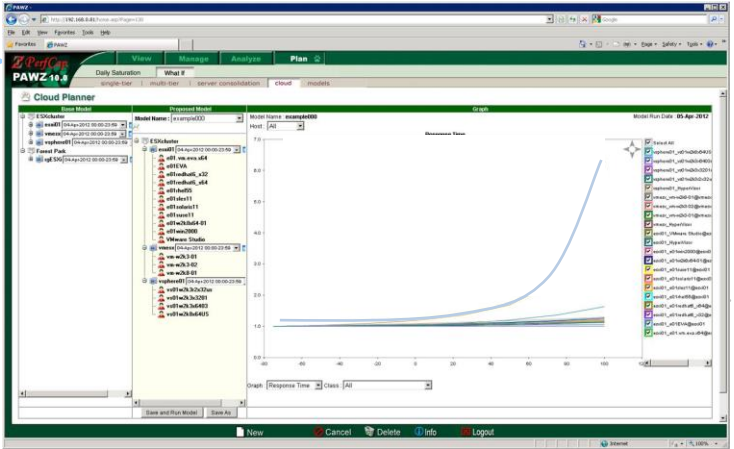
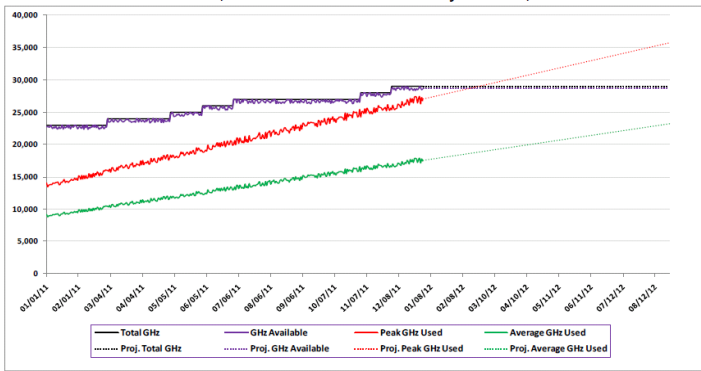
Rome Datacentre Capacity Statistics
3-Jun-2011 15:00 to 4 Jun-2011 15:00



At each level, summary reports for all resource dimensions with total, peak, average, and unavailable resources graphed.

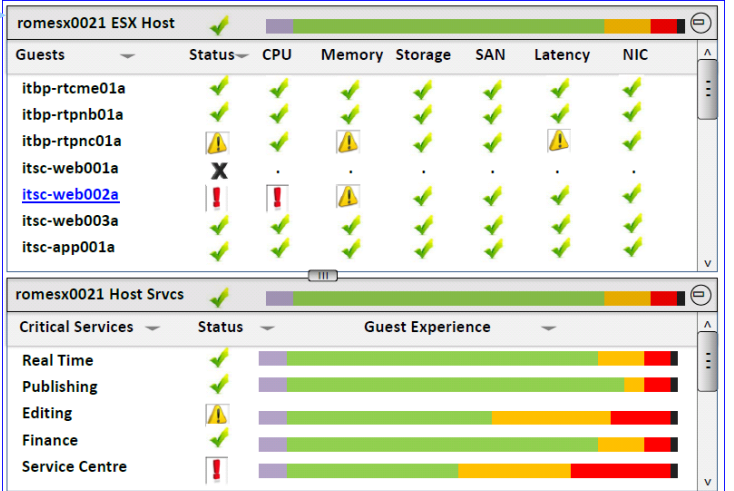
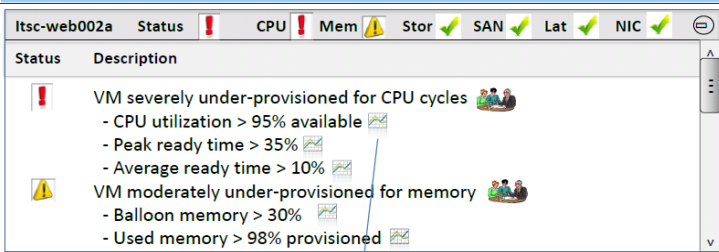
Impact of moving guests using "What if" modeling

Rome Data Center, CPU GHz Resource Projections, 31-Dec-2011

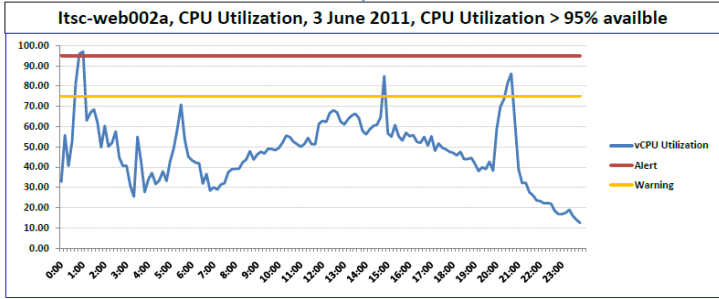


Projection of future daily average and peak resource utilizations against available resource.

Summary of host's virtual machine provisioning status with links to detailed analysis.



Observed VM provisioning issues with links to evidence and recommendations.



All product names mentioned herein may be registered trademarks of their respective companies. PerfCap shall not be liable for technical or editorial errors or omissions herein. The information in this document is subject to change without notice.